



# Axial Flow Cabinet Fan

## CGT Serie

CGT/4-1250-6-  
II2GExdIIB(H2)T4-50Hz



Range of adjustable pitch aerofoil blade, axial flow cabinet ventilatoren. Fan casing manufactured van heavy gauge galvanised sheet steel internally lined with 25 mm thickness fireproof fibreglass acoustic insulation (M0). All modellen incorporate separate high grade diecast aluminium blades locked within a pressed sheet steel hub.

### motoren

Available, depending upon the model: with three phase motoren in 4 or 6 poles.  
with three phase two speed motoren 4/8 or 6/12 poles.

All the motoren are IP55, Class F insulation.

Electrical supplies:

Three phase 230/400V-50Hz up to 3kW.

Three phase 400V-50Hz, for higher power motoren and two speed motoren.

(See characteristics chart).

**Additional information**Standard air direction: form (A) configuration.

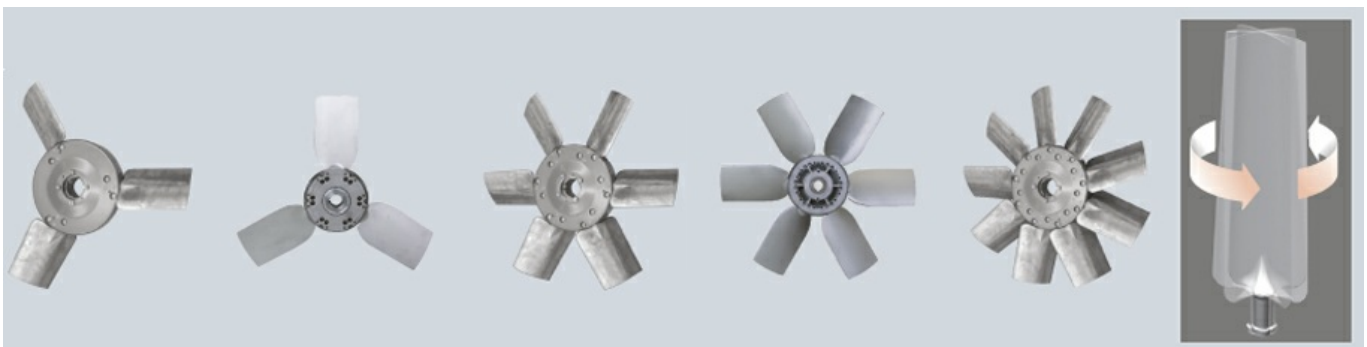
(Motor over Impeller).

**On request**Air direction: form (B) configuration(Impeller over Motor).

Single phase motoren 230-50Hz up to 2,2kW.

motoren with PTC.

### + Attributen



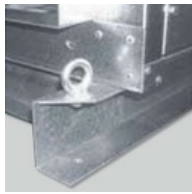
#### Gran versatilidad, por número de álabes e inclinaciones

La multitud de combinaciones, gracias al número de álabes (hélices con 3, 5, 6, 7 y 9 álabes) y de inclinaciones (hasta 16), permite elegir el motor más adecuado a cada instalación y ajustar el consumo.



**Beschermtd tegen corrosie**

Casings manufactured from galvanised sheet steel. Design enables the casing side panels to be removed and the motor/peller assembly accessed.



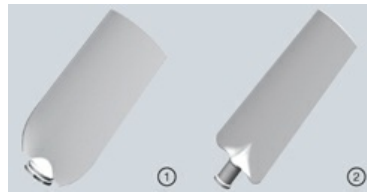
**Eenvoudige installatie**

Robust base supports facilitate the installation. (modellen van 900 to 1250).



**Dynamisch uitgebalanceerde waaier**

Dynamisch uitgebalanceerde waaier, according to ISO 1940 standard, providing vibration free operation.



**Wide blade design: higher pressure**

Wide blade design to ensure the highest efficient airflow

**+ TECHNISCHE GEGEVENS**

Unfortunately an error occurred.

## **+ AFMETINGEN**

Unfortunately an error occurred.

11

## + CURVES

